

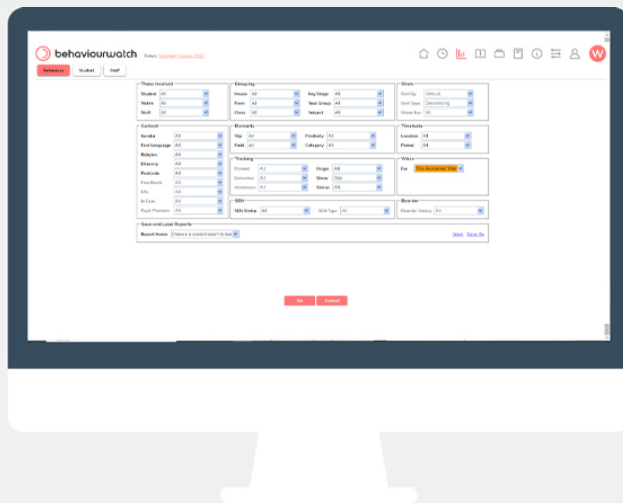
Welcome to your BehaviourWatch user highlights!

As part of our commitment to ensuring that you have the best user experience with our BehaviourWatch or SchoolPod solution, we have introduced this regular support newsletter. It will keep you informed with any development updates, new resources and quick tips to ensure you get the most out of our products.

Did You Know?

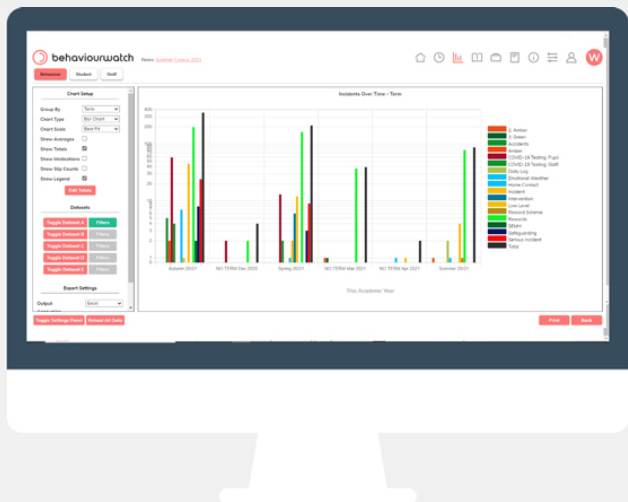
Subjects & Locations

Admin users can add additional subjects and locations to the system at any time. By going to the Admin area, you can find Subjects and Locations within the School Structure Section. In each area there is an Add button in the bottom right which will allow you to add subjects and locations for use within slip recording and reporting.



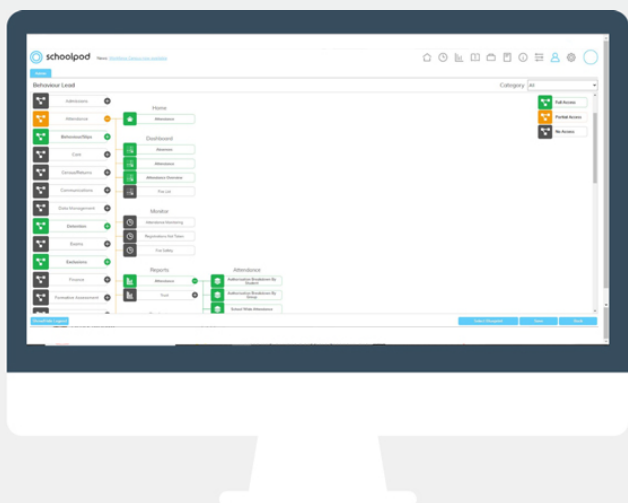
Incidents Over Time

This report will default to present the total of all your slips to date across the academic year, separated into months. The report can be customised by changing the Chart Scale on the left-hand side of the page to a Linear or Best Fit view, to change how you present the data through the Group By drop down, such as by Week, Month or Term. You can also Filter to specify and individual, to select only a certain slip to view and to change the date range.



Modular Access

Save time on assigning access to system users with modular access. Switch from your current access to the modular functionality at any time, with the ability to create access to groups for staff. New starters can be made members of an existing group to provide them with all the system access they require.



Support Links

For more information, tips and tricks have a look at the Help Centre within BehaviourWatch, or contact the support team

Visit Our Help Centre

Contact Our Support Team